

About

# *AlphabetLetter*

*Cards AaAa to ZzZz*

*Versions 1, 2, 3, 4, 5 =*

ISBN 978-1-934637-19-7

Each deck of 104 *Alphabet LetterCards—Versions 1, 2, 3, 4, or 5*—contains four (4) styles of each of the twenty-six (26) letters of the English (roman) alphabetic writing system *AaAa* to *ZzZz*. In each set of four letters, there is a pair of one upper-case (capital) and one lower-case (small) *manuscript* (*block*) letter, as well as one upper-case and one lower-case *cursive* (*handwriting*) letter.

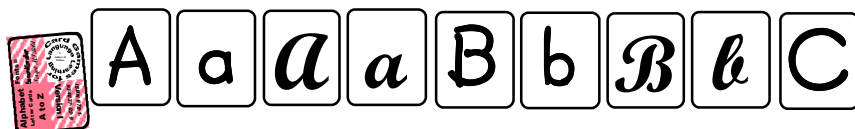
AaBb CcDd EeFfGg HhIiJk KkLlMm NnOoPp QqRrSs TtUu VvWw XxYyZz	UPPER- CASE (CAPITAL) & lower- case (small) MANUSCRIPT (Block-Print) ← Letters	UPPER- CASE (CAPITAL) & lower- case (small) <i>Cursive</i> (Handwriting) Letters →	AaBb CcDd EeFfGg HhIiJk KkLlMm NnOoPp QqRrSs TtUu VvWw XxYyZz
--	--	--	--

About *Alphabet LetterCards AaAa to ZzZz*,  
*Versions 1, 2, 3, 4, 5 = ISBN's 978-1-934637-19-7*

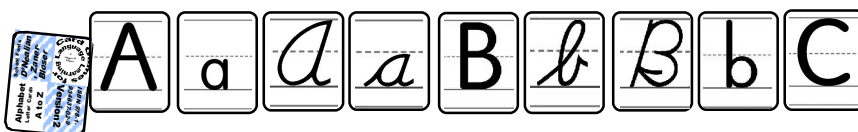
The five (5) 104-card packs can all be used in the same engaging, efficient, and effective ways.

For variety, motivation, and efficiency, however, they display five different formats:

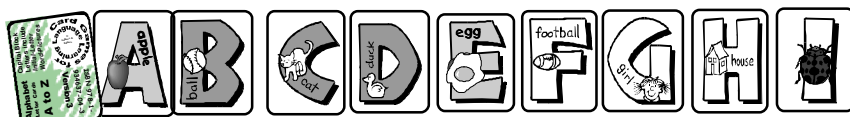
1. **Version 1** is simplest, with 52 upper- and lower-case block-letters in *SecondGrader* font, 52 upper- and lower-case cursive letters in *Script MT Bold*, and identical card backs. The double-deck card pack is designed for basic language learners who need to recognize what is *essential* to each letter shape. It may be most helpful to people whose native languages do *not* use the Roman alphabet or who don't yet read English.



2. **Version 2** may also help in penmanship instruction. Its 104 letters appear on handwriting guidelines in the *D'Nealian* or *Zaner-Bloser* styles, most often taught in American elementary or grade schools.



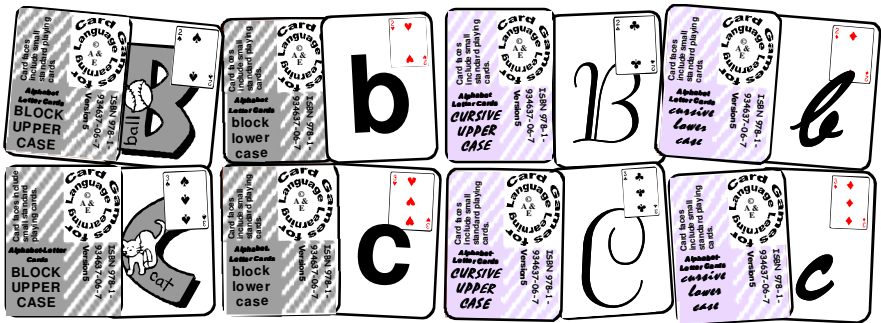
3. In **Version 3**, the 26 capital block letters are *artistic images* rather than *printed characters used in writing*. Each of these letter shapes includes a pictured item whose name begins with that letter, so *this* quarter (1/4) of the 104-card pack can also serve for beginning phonics/spelling instruction.



4. **Version 4** is a dual-purpose pack of 104 *LetterCards*. The card faces show the four forms of alphabet letters. Their backs display two full 52-card decks of traditional playing cards—the 13 ranks A23456789 10JQK in each of the four suits ♠♣♥♦. Because the block letters in alphabetical order correspond to the spades and clubs in rank order, and the cursive letters, to hearts and diamonds, either side can be used to play popular, traditional card games.



5. In **Version 5**, the 104 card faces include small *standard playing cards* that correspond to the letters; their backs identify the letter form (*upper- or lower-case manuscript or cursive handwriting*). The capital block letters include small pictures with their names. This doubled-deck, two-sided pack of cards is the most complex, but most versatile, of all five versions.



Because the 108 *Alphabet LetterCards* of each *Version* are printed nine to a page, there are *four extra cards* per AaIla to ZzZz pack. To help card users, these display some basic info, suggestions for educational activities, and card-game instructions.

About *Alphabet LetterCards AaIla to ZzZz*,  
*Versions 1, 2, 3, 4, 5* ISBN's 978-1-934637-19-7

# *Alphabet LetterCards* *Activity & Idea Book* Table of Contents

Section Titles	pages
About <i>Alphabet LetterCards AaAa to ZzZz</i> <i>Versions 1, 2, 3, 4, 5 =</i> ISBN 978-1-934637-04-3, -14-7	3-5
Using <i>Alphabet LetterCards AaAa to ZzZz</i> for Learning Activities	7-10
<i>Alphabet LetterCard Matching Games:</i> <i>Same Letters, Concentration,</i> <i>Pass-the-Card, Go Fish, I Doubt It</i>	11-16
<i>Alphabet LetterCard Sequencing Games:</i> <i>Higher Letters Win, Sequence,</i> <i>Rockaway, Rolling Stone, Rummy</i>	17-21
<i>Alphabet Answers: Everything to Know (Now)</i>	22
<i>Other Alphabet-Learning Materials:</i> <i>Alphabet-Letter Paired (Spelling) Grids and</i> <i>Letter-Bingo &amp; Lotto Tear-Off Pads,</i> <i>English-Roman &amp; World Writing Systems</i>	23-24
<i>Spelling with Alphabet LetterCards:</i> <i>eeeeeeeeeeeeettttttaaaaaaaaaaoooooooo</i> <i>iiiiiiiiinnnnnssssrrrrrrhhlllldddddcc</i> <i>uuuummffppgggwwyybbvvkxjqz</i>	25-30